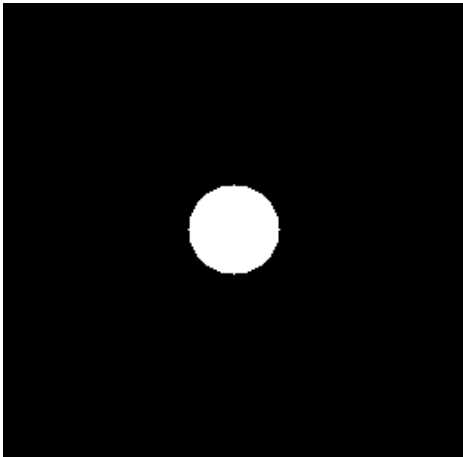


## MLEM vs. HYPR

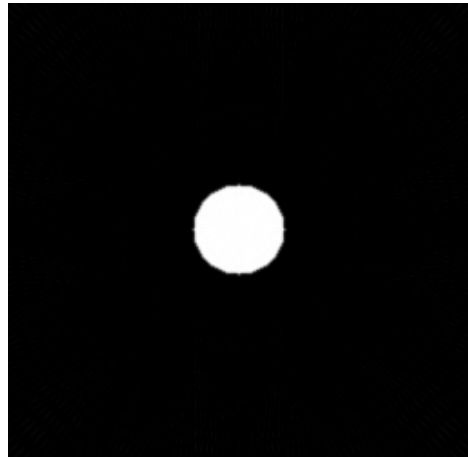
Original HYPR was compared a 1-step MLEM algorithm. A time-invariant disk with radius 25 pixels was centered in a 256x256 background. 128 different projection angles were used (ordered using bit-reversed ordering), and the size of the window was set to 8 projections.

The figures shown below are the actual image, the composite image, the HYPR reconstruction for the first HYPR frame, and the corresponding MLEM image. The HYPR and the MLEM images are indistinguishable, although the mean absolute error is slightly higher for HYPR than for MLEM. More detailed comparisons of MLEM and HYPR are planned.

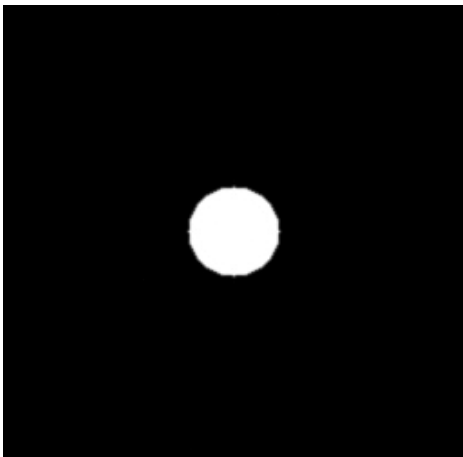
actual image



composite image



HYPR Reconstruction for Projections 1-8



MLEM Image for Projections 1-8

